

AVANTE[®]

garage doors

ALUMINUM AND GLASS CONSTRUCTION



America's Favorite Garage Doors[®]



Model AXU, Dark Bronze (Anodized) Frame with Obscure Insulated Glass

AVANTE®

Avante® garage doors are designed with architects, contractors and homeowners in mind. With a sleek aesthetic and section seal, these doors are the perfect choice to modernize any home. Not only can they transform garages, they can also be used as an indoor loft partition or as versatile solarium doors. Many glass options are available to control the degree of light transmission and privacy.



Model AXU

Model AX

STYLE AND CONSTRUCTION

- Aluminum frame provides a virtually maintenance-free, long-lasting door.
- Intellicore® polyurethane insulated rails and stiles. (Model AXU)
- R-value 3.8/U-factor 0.86. (Model AXU when glazed with clear insulated glass)
- Many glass and panel options available.
- Section joint seal helps keep out air and water.
- Integral reinforcing fin provides increased strength and longevity. (Available on double car models)
- Heavy-duty steel ball bearing rollers with nylon tires provide quiet operation.

**Doors wider than 14' include built-in reinforcing fin. Standard doors 12' and under do not use built-in reinforcing fin. Usage on widths 12'2" to 14' depend upon glass weight. WINDCODE® doors may vary. Contact your Clopay Dealer for details.*

Calculated door section R-value is in accordance with DASMA TDS-163.



FRAME/SOLID PANEL COLOR OPTIONS



CUSTOM PAINT OPTIONS

Custom colors make Avante® garage doors personal. Choose a Color Blast® finish or RAL Powder Coating to create the perfect door. The only limit is your imagination! See your Clopay Dealer for details.

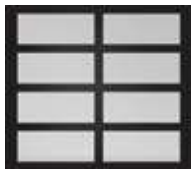


Model AXU not available with RAL Powder Coat finish.

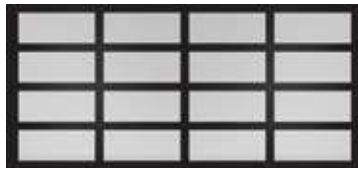


Model AX, Bronze (Anodized) Frame with Frosted Tempered Glass

DOOR DESIGNS



AX/AXU
Single car door



AX/AXU
Double car door

HARDWARE

Attractive color-matched aluminum grip handles.

Available in all standard color options.



WARRANTIES



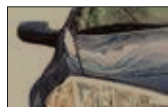
GLASS/PANEL OPTIONS



Clear Glass*



Gray Tinted Glass*



Bronze Tinted Glass*



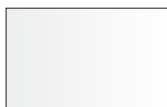
Mirrored Glass*



Obscure Glass*



Clear Laminated
Impact Rated Glass†



White
Laminated Glass



Black
Laminated Glass



Frosted Glass*
(Satin Etched)



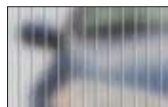
Frosted Acrylic



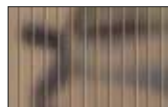
Clear Acrylic



White Acrylic



Clear Polygal™



Bronze Polygal™



Clear Anodized
(Color-matched to frame)

- Glass available in single pane or insulated (laminated and mirrored glass not available insulated).
- Panels can be aluminum to match the aluminum frame. Glass/acrylic panels may be combined with aluminum panels. Custom glass and colors available.

WINDCODE™

Doors available to meet many regional wind load requirements.

WINDCODE® doors over 16' wide may have reinforcement hardware that shows through the glass panels of the door.

*Glass is tempered.

† 5/16" clear laminated impact rated glass is available only on AXW8/AXUW8.

Acrylic windows require special cleaning. Never use products that contain ammonia or petroleum products to clean acrylic. Please visit www.clopaydoor.com/acrylic for complete details.



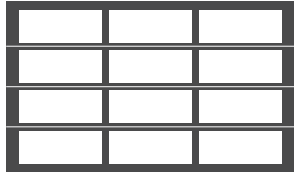
See your Clopay Dealer for details. Or for more information scan this code.

PANEL CONFIGURATIONS *(Examples of common sizes shown below)*

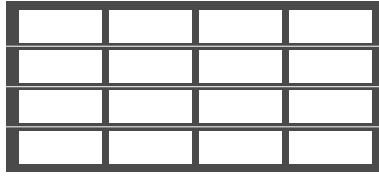
6'6" TO 7'0" HIGH DOORS



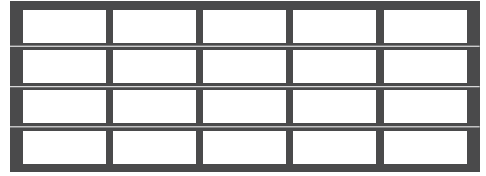
2 Panel
Up to 9'2" Wide



3 Panel
9'3" to 13'2" Wide

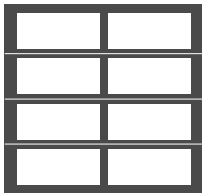


4 Panel
13'3" to 16'2" Wide



5 Panel
16'3" to 20'2" Wide

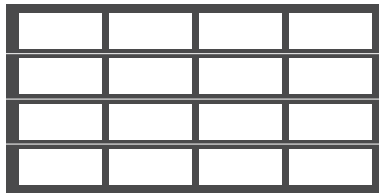
7'3" TO 8'0" HIGH DOORS



2 Panel
Up to 9'2" Wide



3 Panel
9'3" to 13'2" Wide



4 Panel
13'3" to 16'2" Wide



5 Panel
16'3" to 20'2" Wide



Model AXU, Black (Anodized) Frame with Frosted Insulated Glass



Visit [clopaydoor.com](https://www.clopaydoor.com) or call 1-800-2CLOPAY (225-6729) for more information on Clopay, America's Favorite Garage Doors.

Follow us on



MADE IN USA



DESIGN YOUR DOOR
OPEN CAMERA
AND POINT!

©2023 Clopay Corporation. All rights reserved.

RSDR-AVANTEAXSS-19_REV1223